

OpenText[™] Output Transformation Server

Seamlessly manage and process content flow across the organization

OpenText Output Transformation Server processes, extracts, transforms, repurposes, personalizes and stores high volumes of data and documents, enabling enterprise-level storage management, real-time access, online presentment, PDF accessibility, printing and delivery of information across multiple channels.

Output Transformation Server is a robust, flexible and highly scalable processing engine that manages content flow and business processes across the enterprise. With an extensive set of interfaces and adaptors, Output Transformation Server enables organizations to integrate back-office systems, archive repositories and customer-facing applications to form a single consolidated system to efficiently manage high-volume enterprise content and system-generated customer communications.

Designed for robust and scalable systems integration, Output Transformation Server possesses the flexibility to seamlessly manage components of the OpenText Transformation suite and integrate with existing IT infrastructures. Output Transformation Server features connectivity functions and job management capabilities to enable automatic content processing for high-volume and enterprise-level requirements. Additionally, Output Transformation Server features enterprise-class capabilities, including clustering, load balancing and automatic failover to meet demanding business and Service Level Agreement (SLA) requirements.

Output Transformation Server is an enterprise processing engine that captures, identifies, processes and routes structured and unstructured data and documents across enterprise systems, delivering content flow across disparate applications and business units. It processes and manages business operations with definable and automated processes, automatically delivering operational and management capabilities where, when and how they are needed.

Transform information into intelligent content

Output Transformation Server addresses several problems facing today's organizations, related to managing high-volume output. As organizations grow and evolve, new systems and applications are required to satisfy ever-changing business demands. The challenge for IT professionals is to provide integration between disparate business systems and enable sharing of useful content across business silos. Output Transformation Server delivers benefits of real-time content access, digital presentment, content

BENEFITS

- *Industry-proven system, application and archive integration*
- *Enterprise-class application featuring clustering, load balancing and failover dependable service reliability*
- *Advanced ECM archive integration, enhancing the value of legacy IT infrastructure and enabling enterprise content consolidation*
- *Output transformation capabilities, enabling content extraction and repurposing for cross-business content sharing*
- *Secure delivery, providing industry-proven, high-volume digital presentment*
- *Integration with the OpenText[™] Automated Output Accessibility solution to generate accessible PDF documents for the visually impaired*

extraction, PDF and output accessibility, high-volume printing and on-demand delivery across multiple enterprise channels.

It lowers the total cost of content ownership by integrating disparate business systems for a single view of enterprise-wide content. Output Transformation Server provides a scalable architectural framework on an integrated Java platform, simplifying integration with third-party applications and technology solutions. With its Java-based, multi-threaded architecture, it is able to process millions of transactions—each with sub-second performance.

Streamline content across business silos

Output Transformation Server streamlines organizational content by seamlessly connecting disparate business applications and backend systems. With Output Transformation Server, organizations can repurpose dormant data and high-volume documents for new applications, as well as share content across business silos. With value-added Integration Services, Output Transformation Server eliminates the challenge of integrating data and high-volume documents between disparate applications.

Input and Output Services

Output Transformation Server provides the interfaces required to enable communication between incompatible technologies, contemporary applications and systems deployed by enterprises today. Input and Output Services use open standards, ensuring the security and reliability needed for point-to-point transport and exchange of information over the Internet. Additionally, Input and

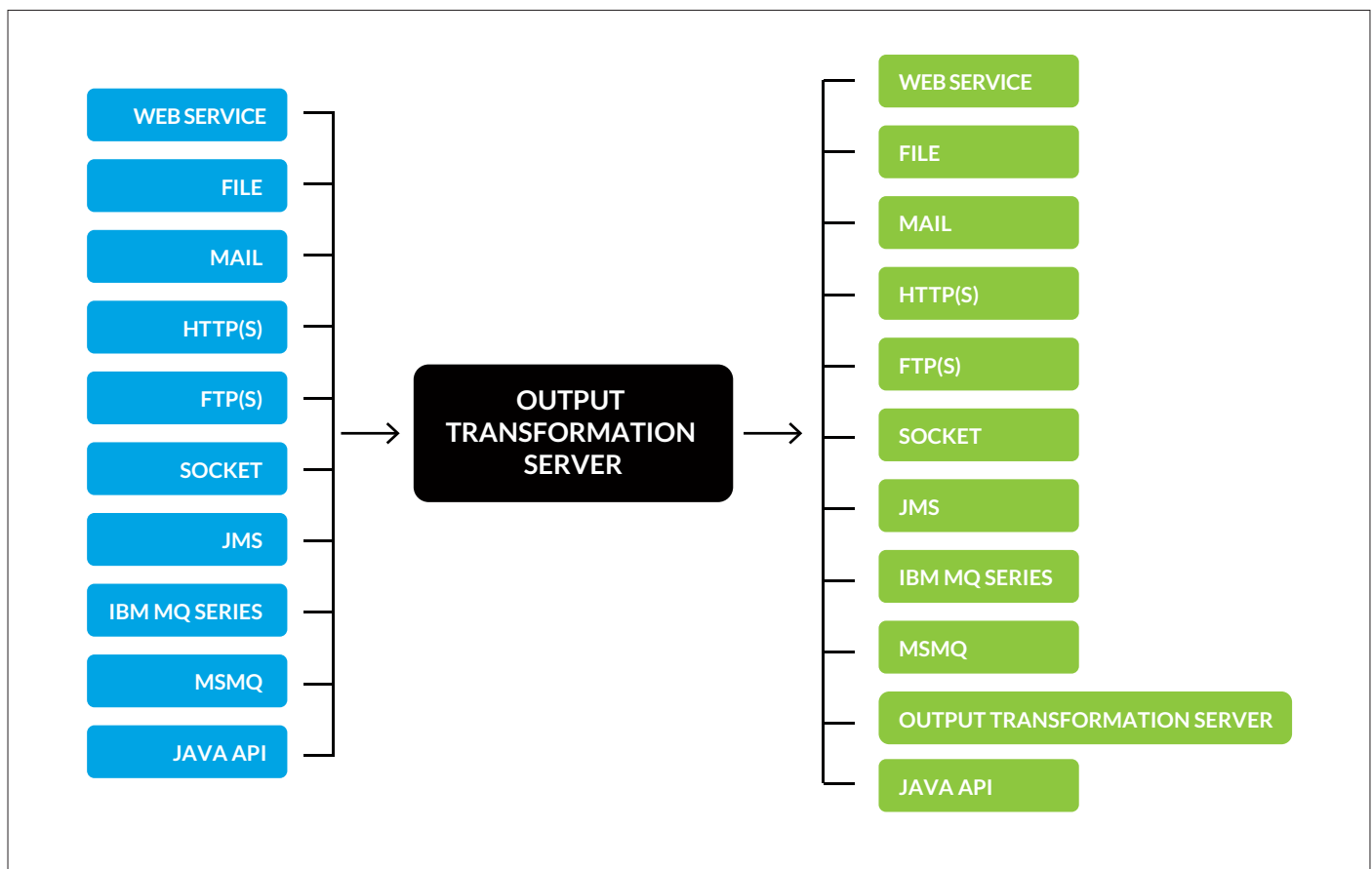
Output Services invoke the desired processes and components to trigger automated business logic.

Integration Services

Integration Services invoke third-party functionalities from within Output Transformation Server process flows, seamlessly integrating business processes with other services, such as transformation, workflow, predictive analytics, document composition systems, enterprise content management (ECM) systems and more. Output Transformation Server comes with out-of-the-box integration components, making it simple to integrate common third-party capabilities. Additional integration components can easily be created using Output Transformation Server’s extensible Java and Web Services APIs, from within the OpenText™ Output Transformation Designer or an external Java Integrated Development Environment (IDE).

Enhance content management solutions

One of the major benefits of Output Transformation Server is its ability to integrate and enhance ECM solutions, including document management systems (DMS), integrated document archival and retrieval systems (IDARS) and enterprise report management (ERM) systems. With Output Transformation Server, ECM archive integration can be easily achieved with a single interface to access content residing in external repositories, allowing external applications to communicate with disparate repositories without requiring individual connections.



Input and Output Services

Repository Services Interface

The Repository Services Interface provides a common way of accessing content in external repositories. Applications can access content stored in external repositories through integrated services to manage the underlying communication, including the abilities to search, retrieve, load and cache resources from a variety of ECM systems such as:

- IBM® Content Manager OnDemand
- IBM® FileNet® P8
- IBM® FileNet® Image Services
- Content Management Interoperability Services (CMIS) Enabled Systems

Archive Navigator

The Archive Navigator provides an intuitive web-based experience for accessing content on disparate enterprise archives. Archive Navigator connects multiple repositories for consolidated content access, enabling users to search, retrieve and view content stored across the organization.

Archive Navigator includes:

- **Document view** - Documents can be opened and viewed directly in Archive Navigator. With the View As feature, users can dynamically transform non-viewable document formats like AFP to viewable formats including PDF and TIFF.
- **Large document viewing** - Allows users to view, merge and download multiple documents.

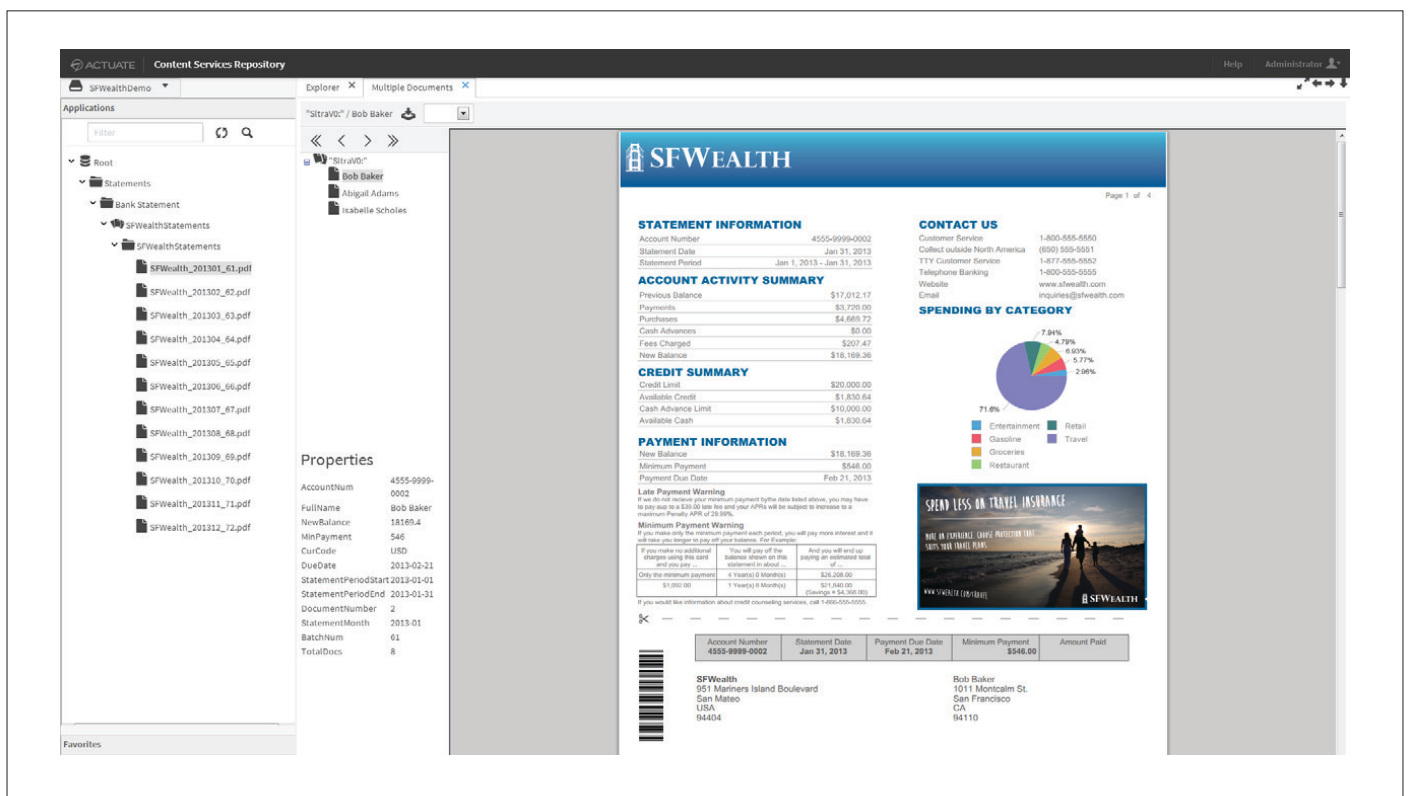
- **Search** - Basic and advanced search capabilities enable users to search for documents across applications. Basic search allows users to search for documents by using document properties, while advanced search allows users to use advanced scripting to search across multiple applications.
- **Localization** - Archive Navigator is localized in English, French and German.

Additionally, OpenText™ Output Archive includes a web-based Output Archive Manager for configuring and administering the Output Archive. Administrators can set up applications, monitor repository instances, define access permissions, configure jobs and auditing, manage physical and logical storage, define content retention and configure distribution channels. Reporting capabilities within the Archive Manager help the administrator monitor and improve the performance of key variables within the archive system, including file and storage space, search time and retrieval time.

Transformation

In addition to integrating with ECM systems, Output Transformation Server also provides value-added services to better leverage enterprise content in supporting business strategies.

OpenText provides the functionality and support required to transform data and high-volume documents by extracting, indexing and repurposing information from documents and high-volume print streams. This functionality enables organizations to migrate and consolidate enterprise content by extracting information from documents and print streams and creating index files to load documents to new repositories, or recomposing documents to deliver a single, consolidated document from information obtained across multiple applications and business units.



Archive Navigator

Examples of the business documents and data that we work with on a daily basis include:

- **Statements** - bank, brokerage, credit card, etc.
- **Applications** - loans, customer service, etc.
- **Reports** - operations, healthcare, manufacturing, etc.
- **Bills** - telecommunication, utility, etc.
- **Forms** - tax, customs, shipping, insurance declarations, etc.
- **Partner communications** - ports, manufacturing, healthcare, etc.

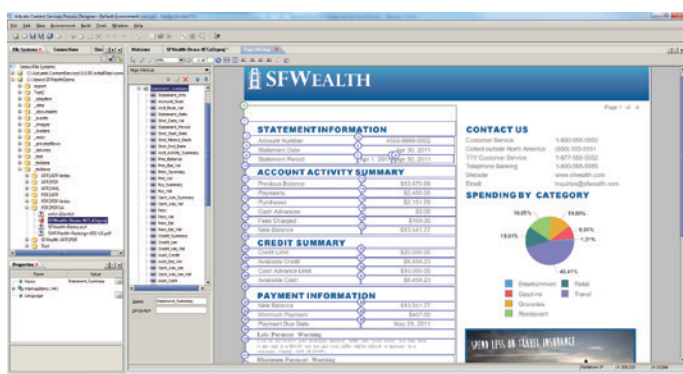
Output Transformation Server provides and integrates with parsers and generators used for document and data transformation. These parsers and generators enable customers to extract, transform and repurpose both structured and unstructured content as an enterprise service for service-oriented architecture (SOA) environments, increasing content agility to rapidly adapt to changing compliance and standards requirements, while minimizing compliance risk, lowering the total cost of ownership, improving productivity and reducing cycle time by eliminating error-prone manual processes.

High-volume documents

The Output Transformation engine transforms and repurposes electronic documents and print streams. High volumes of documents are indexed, transformed and repurposed into a variety of business-critical applications for enterprise report management (ERM) and ECM archiving, retrieval, presentment and delivery.

Automated accessibility

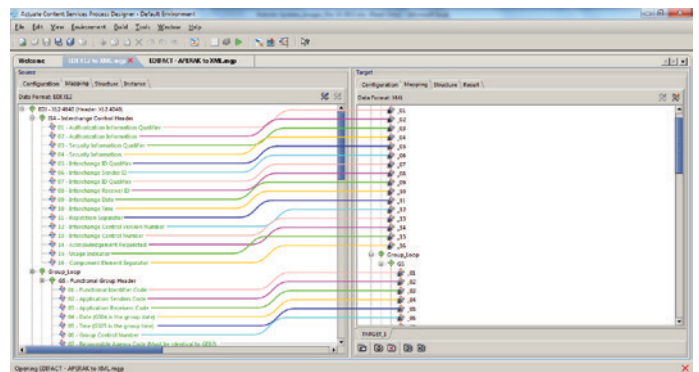
In addition, the Output Transformation engine can transform high-volume documents into PDF documents that are accessible for visually-impaired users, using assistive technology. OpenText™ Automated Output Accessibility solution captures content from electronic documents, identifies tables, sections, fields and images and inserts alternate text and appropriate tags to output as accessible PDF documents. With the Automated Output Accessibility solution, organizations can ensure that statement- or transaction-oriented documents can be accessible to every customer, reducing the need for outsourced document accessibility services.



OpenText Automated Output Accessibility Solution

Data

The OpenText data transformation engine efficiently transforms and augments data with straight-through processing (STP) and intelligently routes a variety of structured data formats over the Internet and between disparate systems. This enables the real-time, high-volume exchange of electronic data with greater adaptability to changing business requirements between internal applications and external business partners without the need for manual code changes.



OpenText Embedded Data Transformation Engine

Content Delivery - when you need it, where you need it

Output Transformation Server enables organizations to share content across the organization and beyond. With several events and processes to acquire and deliver content and components and APIs to integrate with third-party applications and document and data transformation, Output Transformation Server delivers high-volume content across organizations at record speed.

Additionally, Output Transformation Server makes high-volume documents readily available for external online presentment, securely providing customers with online access to relevant and personalized customer communications.

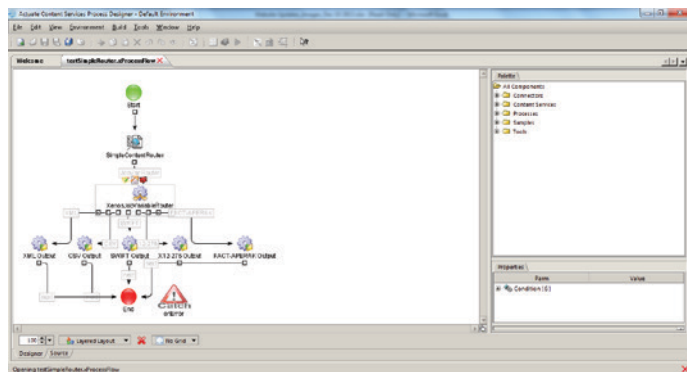
In addition to static online presentment, Output Transformation Server seamlessly integrates with OpenText™ Information Hub (iHub) to deliver interactive content on multiple devices to transform static documents into real-time business intelligence. iHub's powerful analytics provide endless ways of visualizing data through interactive reports and dashboards, enhancing the abilities to extract valuable information by performing data trending, charting and analytics from the interactive viewer.

Configure and automate business processes

Output Transformation Server contains a powerful process flow engine to help customers graphically define and automate their business logic and technical functions to meet unique business requirements without the need for custom coding.

Process flow components

Process flow components are chained together to implement the business logic in a process flow to ensure that enterprise content is correctly routed, processed and consumed based on business requirements. You can also integrate third-party applications/external systems to incorporate/embed additional business functions into the process flow. For example, you could reach into a customer relationship management (CRM) system and obtain customer information not present in the original document or data and use it as additional metadata for loading into your ECM system.



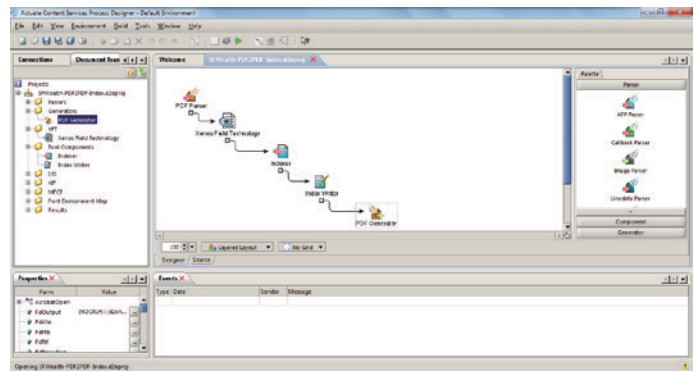
OpenText Output Transformation Server Process Flow Engine

Error handling

Errors in process flows are easily caught and processed through the Output Transformation Server error-handling capabilities, ensuring that correct actions are taken upon process failures.

Output Transformation Designer

Output Transformation Designer is a platform-independent configuration, deployment and control graphical user interface (GUI), simplifying the process of defining and maintaining process flows, components and projects. It is the single-user interface to configure, create and administer all aspects of the Output Transformation Server environment, including data and document transformation. With graphical drag-and-drop capabilities, Output Transformation Designer eliminates the need to hand-code unique business logic while reducing reliance on developers with domain expertise.



Output Transformation Designer

Clustering

With Output Transformation Server, process flows and associated components, configurations and resources can be stored in the Configuration Manager. Configuration Manager allows process flows to be deployed across multiple Output Transformation Server instances and Output Transformation Server clusters, enabling process flows to be easily deployed to development, testing, staging and production instances.